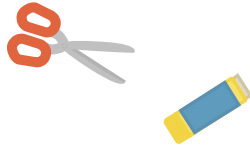




You'll need:

Scissors,
and glue.



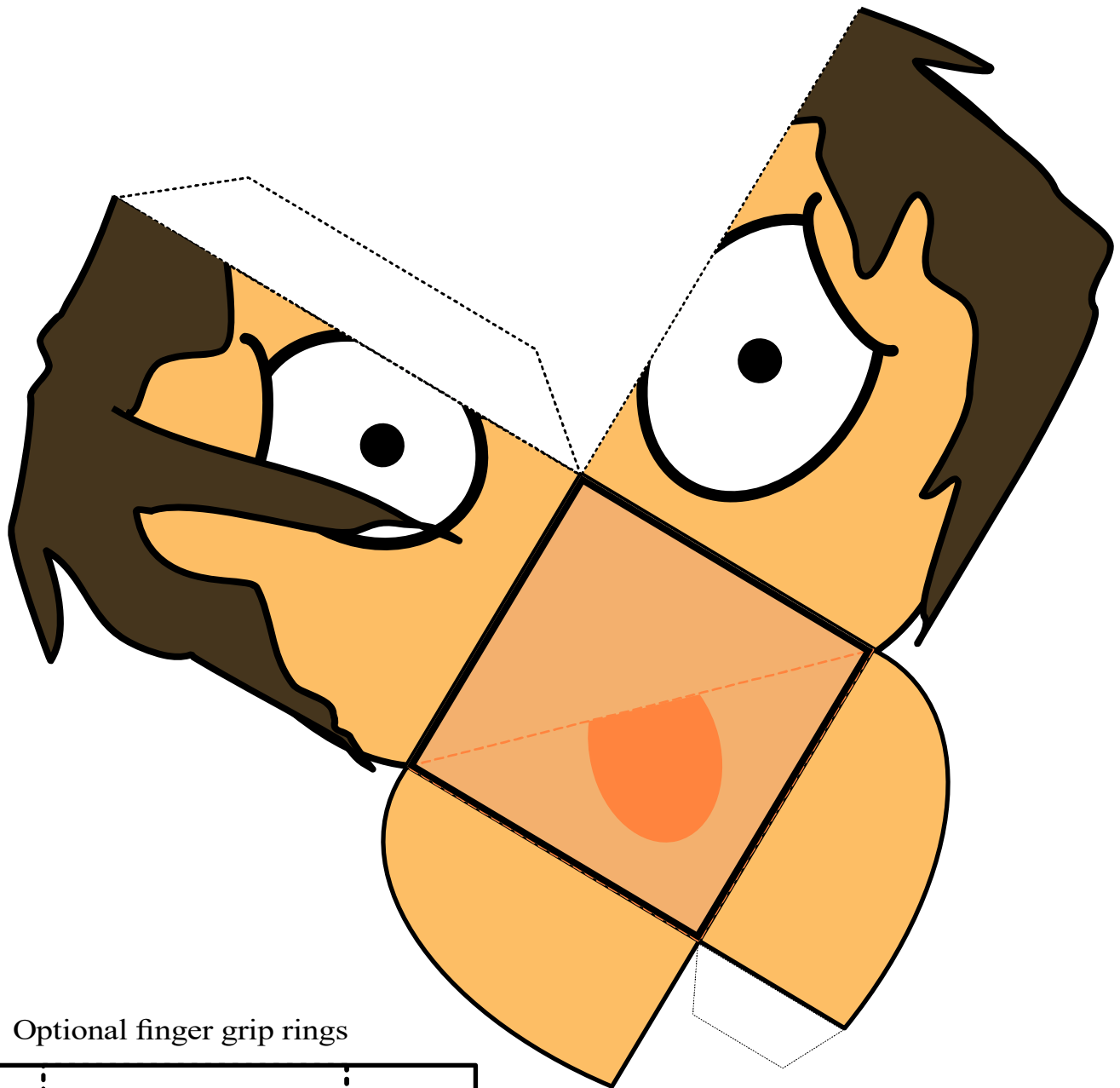
Instructions

Cut out entire shape.
Fold the mouth along the sides and across the middle.

Without folding, add glue to the tabs.
Attach the top of the head together and the chin together.

Cut out the finger grips and fold along the dotted lines.
Overlap and glue the two tabs to form a circle with a flattened side. Glue the flat sides to the back of the mouth.

Put your index/pointer finger through the top loop and your thumb through the lower loop to operate.



Optional finger grip rings

